

# MANUAL TRACK SYSTEM

Series 700





Hjort-conveyor series 700 is a track system for light loads. The load carriers are moved manually. The system can be built up with switches.

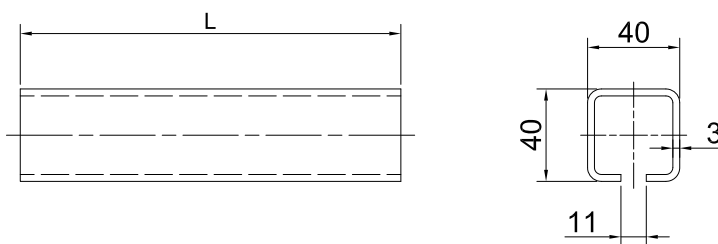
**Max load 50 kg**

**Track**

Order number  
120010

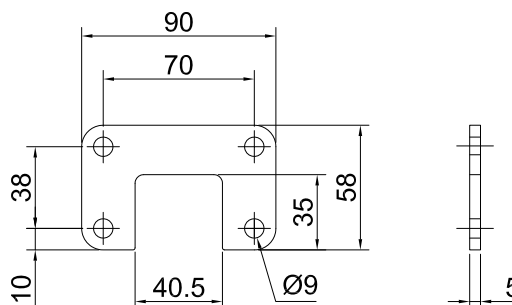
**Technical specifications**

$I_x = 8.2 \times 10^4 \text{ mm}^4$   
 $W_x = 3.8 \times 10^3 \text{ mm}^3$   
 $I_y = 9.6 \times 10^4 \text{ mm}^4$   
 $W_y = 4.8 \times 10^3 \text{ mm}^3$   
 $A = 390 \text{ mm}^2$   
 Weight = 3.1 kg/m



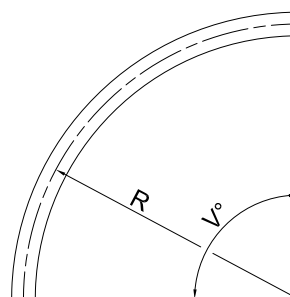
**Flange**

Order number  
120610



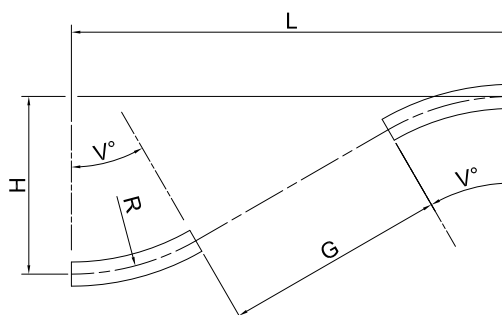
**Horizontal curve 90°**

Order number  
120050 - R 315  
120060 - R 500  
120070 - R 700



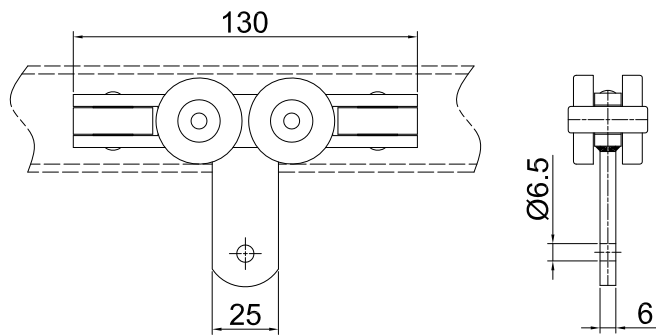
**Vertical curve 45°**

Order number  
120120 - R 700 up  
120130 - R 700 down



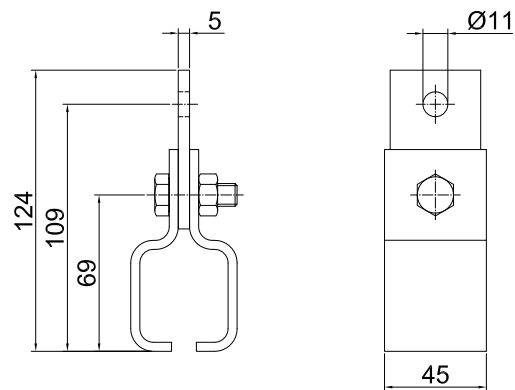
**Trolley**

Order number  
070350



**Suspension fitting**

Order number  
120350



**Switch 90°**

Order number  
070200 (left)  
070210 (right)

