

# OVERHEAD CHAIN CONVEYOR

- Power and free

Series 3500

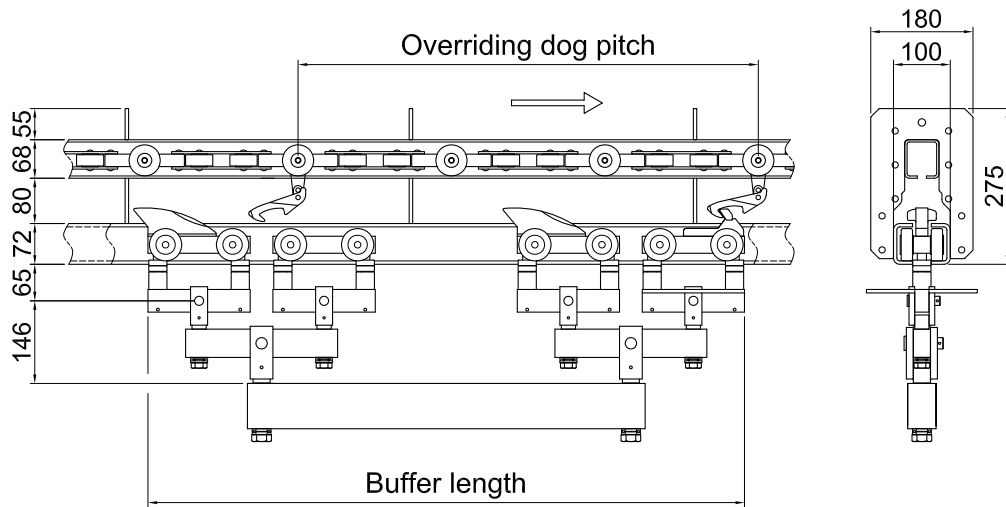




Hjort-conveyor overhead chain conveyor series 3500 is a system for heavy loads where extensive versatility is required. Series 3500 features double tracks where the chain runs in the upper track and the trolleys in the lower track.

The system permits buffering and addressable carriers. Effective and ergonomically correct loading and unloading using drop sections.

**Max load 2000 kg**



The cardan chain is identical to the chain used on series 1000.

The overriding dogs are mounted on the cardan chain at the required pitch spacing. Front and rear trolleys each have 4 steel bearing mounted rollers. The buffer length of the conveyor trolley should exceed the length of the goods to be buffered.

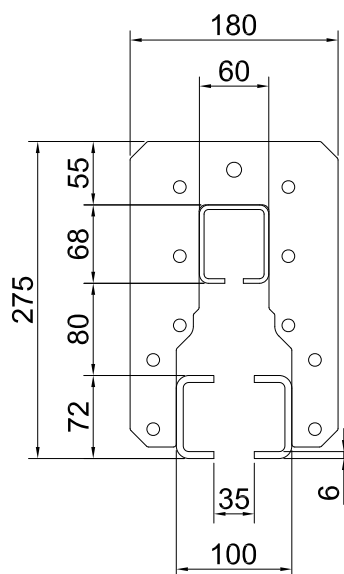


### Track

Order number  
350010

### Technical specifications

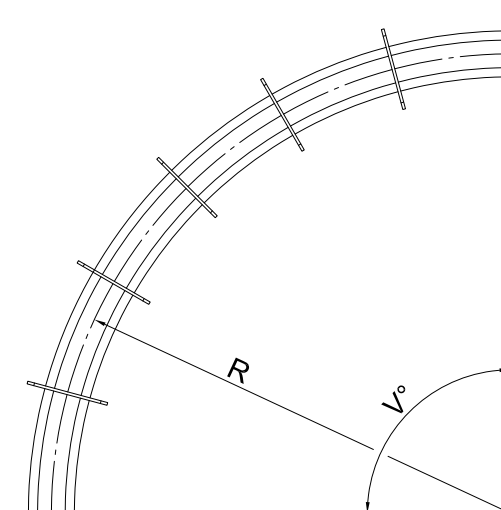
$I_x = 320 \times 10^4 \text{ mm}^4$   
 $W_x = 25.3 \times 10^3 \text{ mm}^3$   
 $I_y = 284 \times 10^4 \text{ mm}^4$   
 $W_y = 56.8 \times 10^3 \text{ mm}^3$   
 $A = 2272 \text{ mm}^2$   
 Weight = 21.7 kg/m



### Horizontal curve

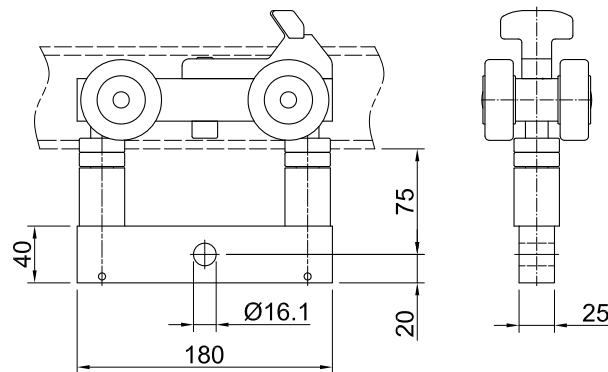
Order numbers	<b>90°</b>	<b>45°</b>
R 700	350070	350075
R 1000	350080	350085

Other angles available on order.



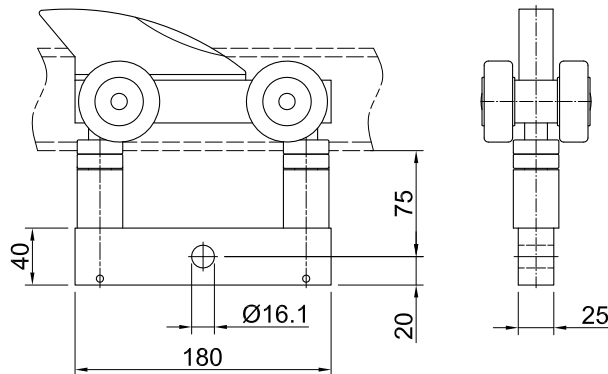
**Front trolley**

Order number  
350400



**Rear trolley**

Order number  
350410



**Trolley**

Order number  
350500

