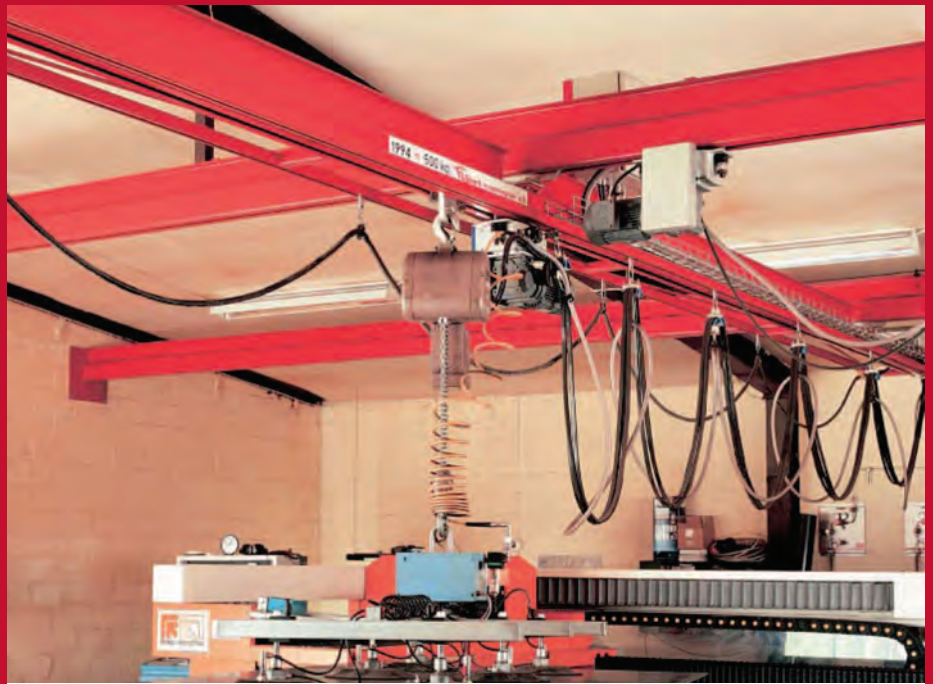
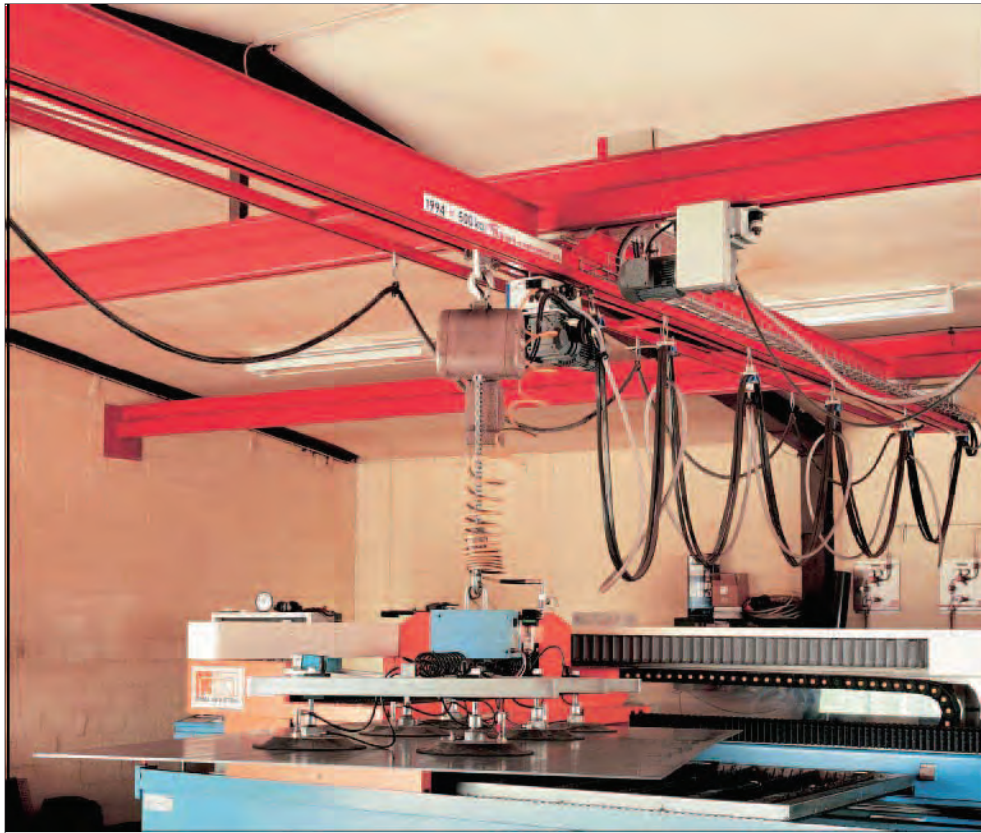


LIGHTWEIGHT CRANE SYSTEMS

Series 300



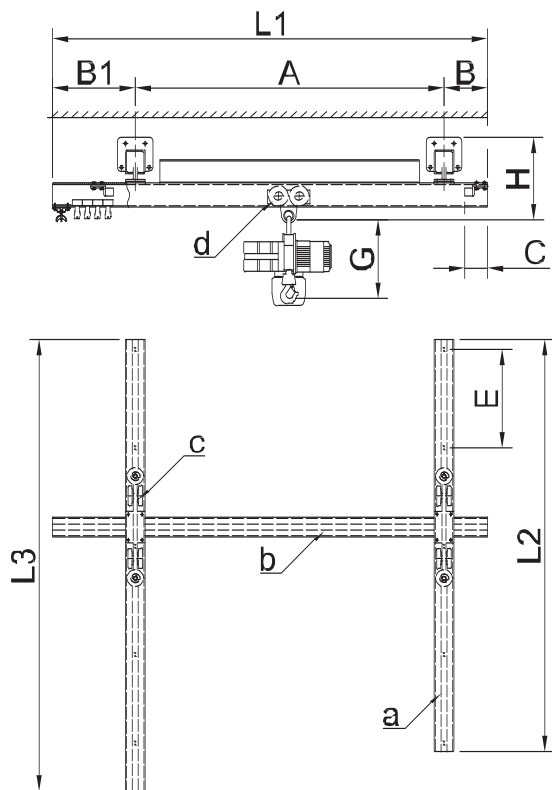


Hjort-conveyor's lightweight crane systems are built-up of standard track based on cold-rolled C-sections.

The cranes are available in manual and powered designs (powered travel gears can be retrofitted).

The track and crane systems can be ceiling mounted without space demanding intermediate hangers, which gives the complete design a low build height.

Maximum load 1000 kg



- A = Span and working area
- B = Half hoist trolley length + C
- B1 = B + space for cable trolleys
- C = End stop length
- E = Hanger spacing
- G = Hoist installation measurement
- H = Crane total height
- L1 = Track length
- L2 = Working area + length for end stop and crane trolley
- L3 = L2 = + space for cable trolleys

- a= Crane track
- b= Crane member
- c= Crane trolley
- d= Hoist trolley

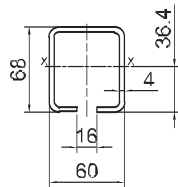
Table 1
 Permitted hanger spacing and span at different loads.

Rated load kg	Section a, b	A max	B	C	E max
125	400	6250	220	110	5650
	500	2000	145	84	2350
250	400	4750	220	110	4650
	500	1500	145	84	1650
500	400	3500	220	110	3450
1000	400	1800	220	110	2450

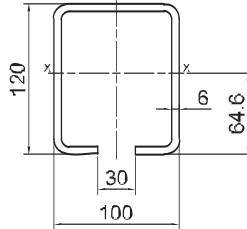
Table 2
 Crane space requirements H with different track combinations.

Track combination	
a/b	H
400/400	419
500/400	329
500/500	282
400/500	372

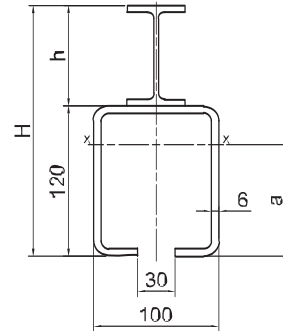
The dimensions above apply to standard designs.
 With greater spans and hanger spacing use track400F.
 See the table on page 300-05.



Track 500



Track 400



Track 400F

Table 3

Track	Material	Area cm ²	Weight kg/m	Ix cm ⁴	Wx cm ³	Iy cm ⁴	Wy cm ³
400	SS2134	22.2	17.5	421	65	363	73
500	SS2134	8.6	6.6	52	14.3	48.5	16.1

Table 4 Track 400F reinforced with IPE

Track IPE	Dimensions				Total area cm ²	Total weight kg/m	Ix cm ⁴	Wx cm ³	Iy cm ⁴	Wy cm ³
	h	w	H	a						
8	80	46	200	89	29.8	23.5	1018	92	371	74
10	100	55	220	98	32.5	25.5	1374	112	379	76
12	120	64	240	107.6	35.4	27.6	1841	139	391	78
14	140	73	260	117.9	38.6	30.1	2445	172	408	82
16	160	82	280	128.9	42.3	33.0	3224	213	431	86
18	180	91	300	139.9	46.1	35.9	4171	260	464	93
20	200	100	320	151.9	50.7	39.5	5377	320	505	101

Table 5 Track 400F span and suspension spacing

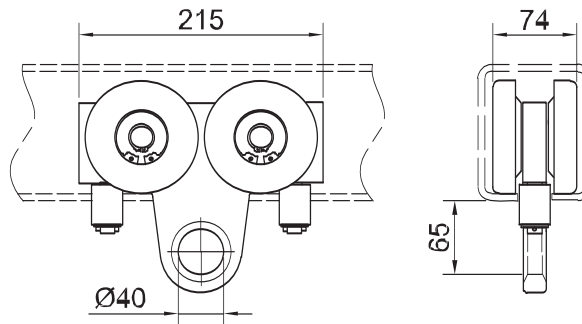
		IPE							
		Kg	8	10	12	14	16	18	20
A max	250	7250	8500	10000	-	-	-	-	-
	500	5500	6250	7250	8500	9750	-	-	-
	750	4250	5000	6000	7000	8000	9250	10500	-
	1000	2500	3000	3750	4500	5500	6750	8000	-
E max	250	6750	7600	8500	9400	-	-	-	-
	500	5200	5950	6800	7700	8650	9500	-	-
	750	4550	5200	5950	6650	7500	8400	9350	-
	1000	3200	3950	4700	5300	6150	6950	7850	-

Hoist trolley

Series 400

Order number
030050

Max load: 1000 kg

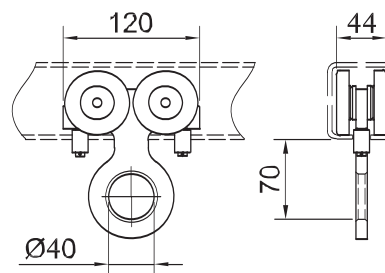


Hoist trolley

Series 500

Order number
030060

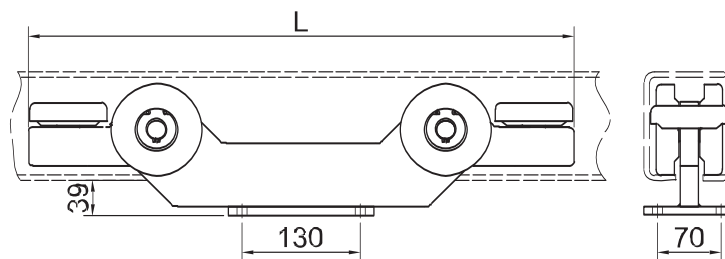
Max load: 250 kg



Crane trolley

Series 400

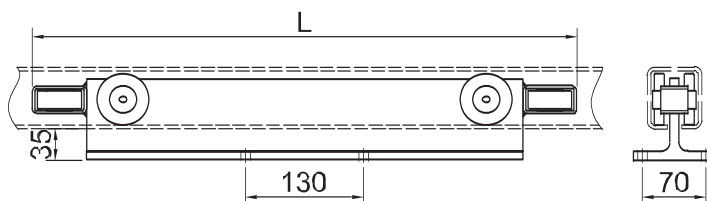
Order number
L=600 030100
L=1000 030112



Crane trolley

Series 500

Order number
L=600 030120
L=1000 030130



Powered travel gear

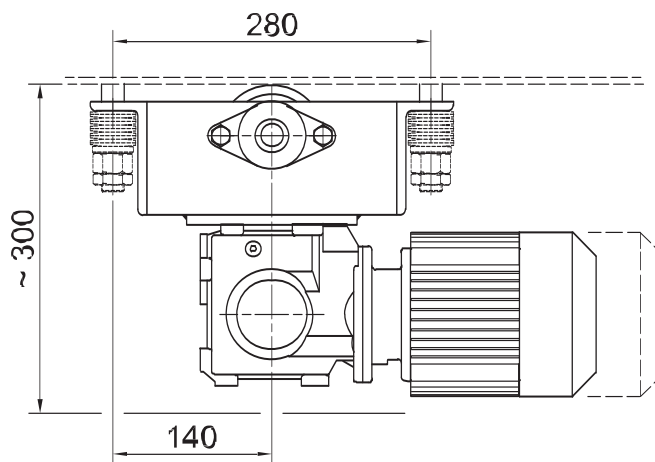
Series 400

Series 500

Order number

030310

Excluding motor

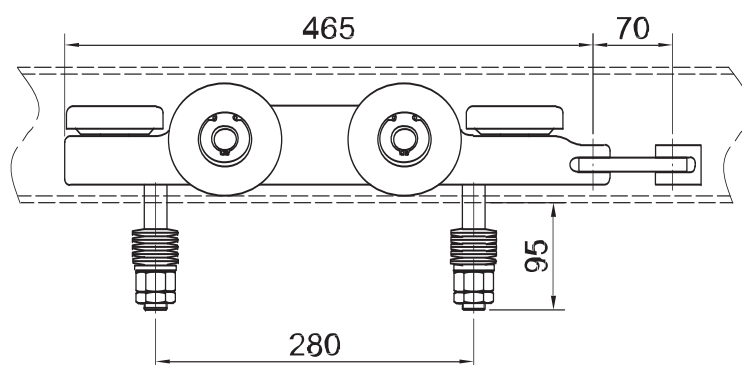


Trolley for powered travel gear

Series 400

Order number

030200

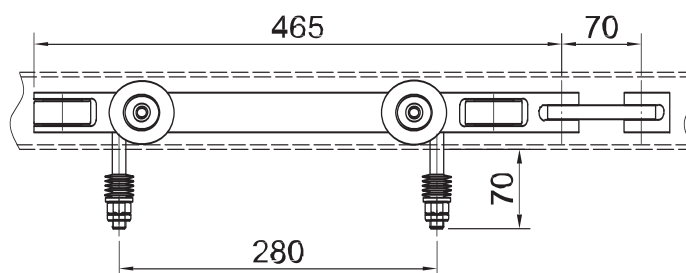


Trolley for powered travel gear

Series 500

Order number

030210



End stop
Series 400

Order number
030350

Series 500

Order number
030360

Design:
Electro galvanized and
equipped with rubber buffer

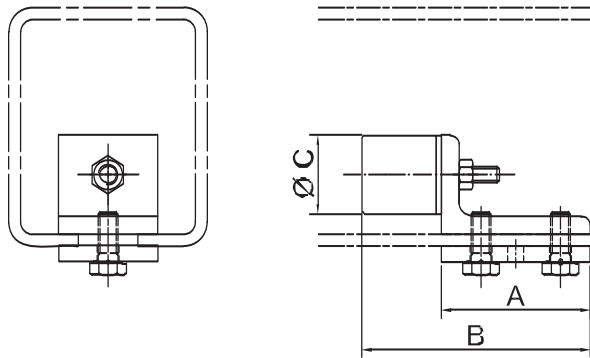


Table 6

Track	A	B	C
400	75	110	40
500	50	84	40

Connection plate

Series 400

Series 500

Order number
030450

For interconnection of
the travel trolley and track

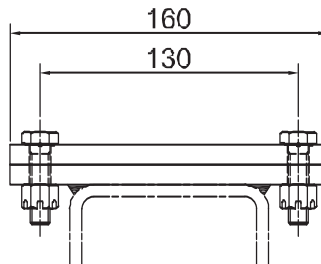


Plate: 160 x 100 x 10
Hole configuration: 130 x
70 x $\varnothing 10.5$

Cable trolley

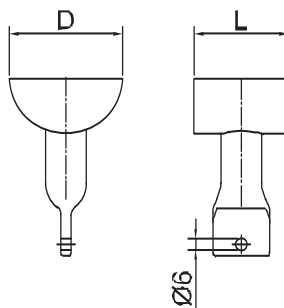


Table 7

Track	L	D	Order no
400	50	60	030150
500	35	45	030160
700	30	25	030170