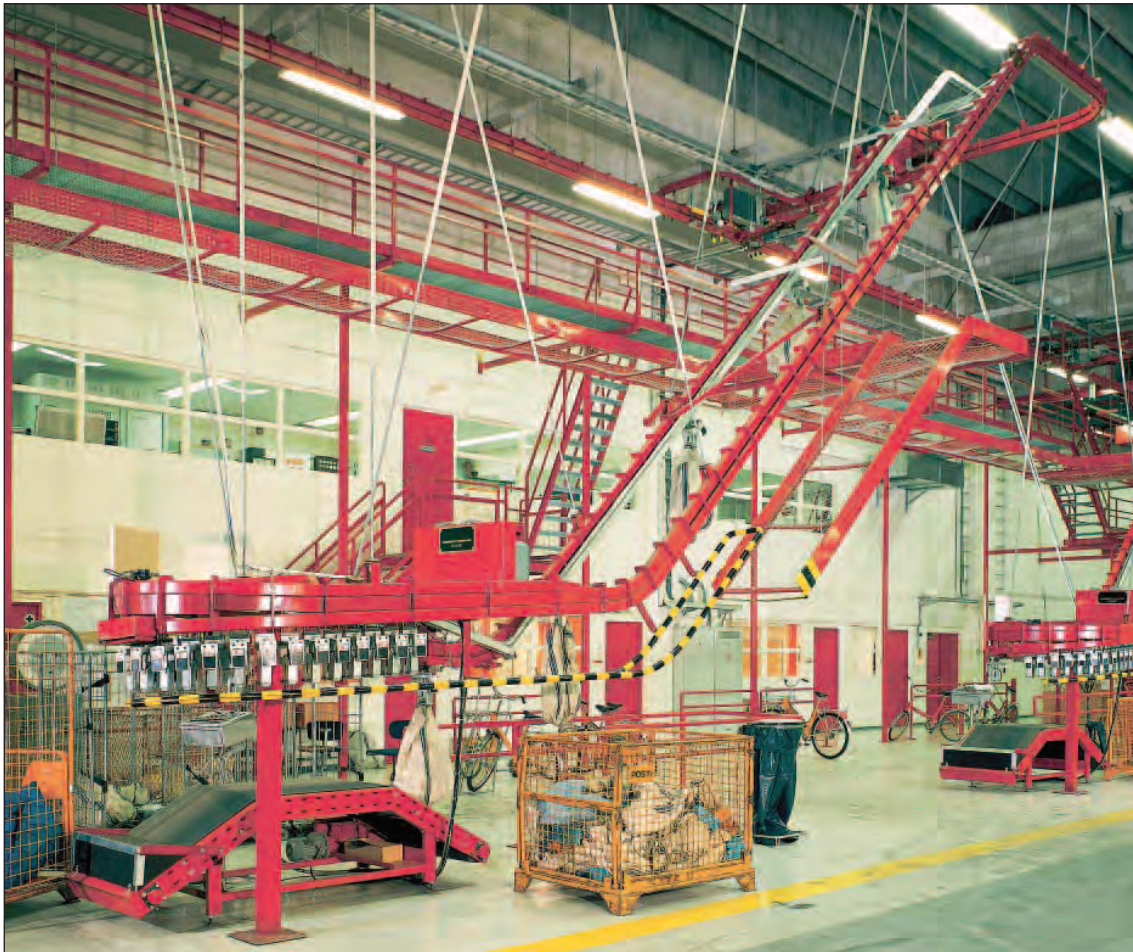


OVERHEAD CHAIN CONVEYOR

- Power and free

Series 3000



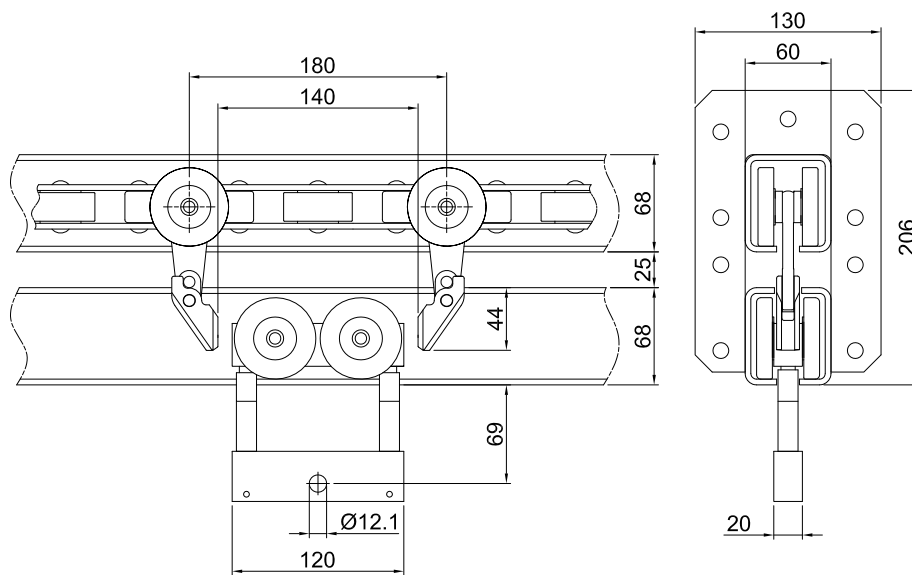


Hjort-conveyor overhead chain conveyor series 3000 has a double track where the chain runs in the upper track and the trolleys in the lower track. The system can be designed with switches for spurs.

Effective and ergonomically correct loading and unloading using drop sections.

Series 3000 can easily be combined with the manual track system series 500.

Max load 250 kg



The cardan chain used on series 3000 is identical to the cardan chain used on series 1000. The pushing dogs are mounted on the cardan chain at the required pitch spacing.



Trolley

Order number
330500

Pusher dog set

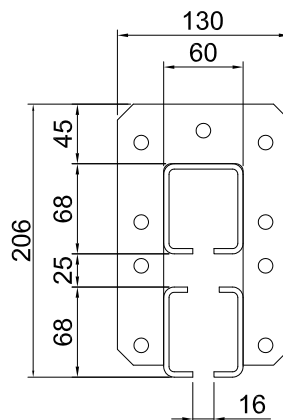
Order number
300800

Track

Order number
 300010

Technical specifications

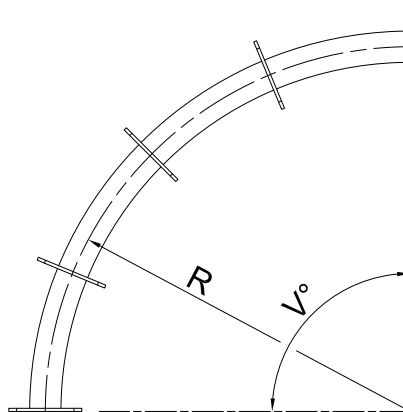
$I_x = 220 \times 10^4 \text{ mm}^4$
 $W_x = 20.4 \times 10^3 \text{ mm}^3$
 $I_y = 96.5 \times 10^4 \text{ mm}^4$
 $W_y = 32.1 \times 10^3 \text{ mm}^3$
 $A = 161 \text{ mm}^2$
 Weight = 15 kg/m



Horizontal curve 90°

Order number
 300050 - R315
 300060 - R 500
 300070 - R 700
 300080 - R1000

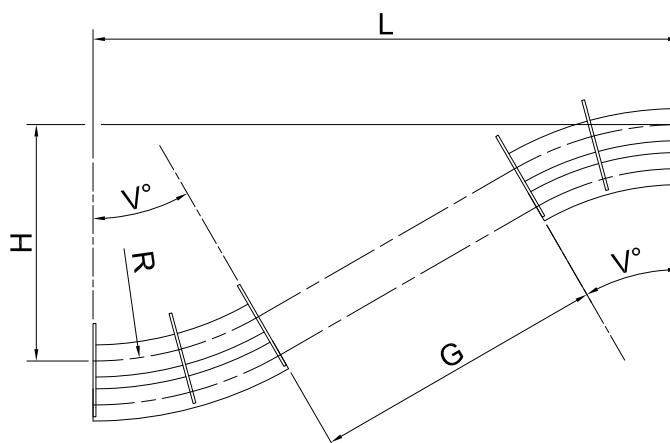
Other angles available on
 order.



Vertical curve 45°

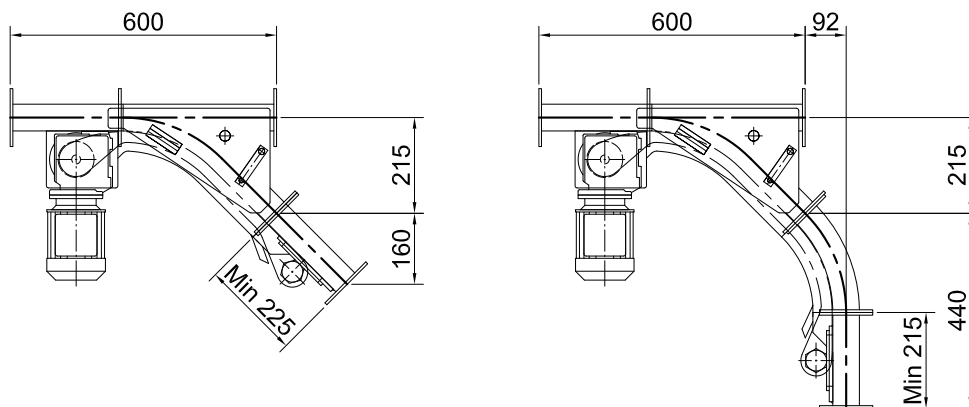
Order number
 300100 - R 700 up
 300110 - R 700 down

Other angles available on
 order.



Powered track switches

45° or more.



Diagram

Dimensioning suspension spacing for conveyor track.

